



Annual Scrutiny Report

safer  brentwood

March 2019

Introduction

Brentwood Community Safety Partnership is the local statutory Community Safety Partnership (CSP) for Brentwood. The purpose of the Partnership is to provide a strategic and collaborative approach to addressing local crime and disorder within the Borough by reducing the levels of disorder including crime, anti-social behaviour, the misuse of drugs and reducing re-offending. However, the partnership is committed to delivering beyond our statutory obligations and understand the importance of wider community safety issues to local communities such as Neighbourhood Watch (NHW), Speedwatch activity and continuing to develop home safety activity with our partners such as Essex Police and Essex County Fire & Rescue Service (ECFRS).

The partnership is made up of both Statutory and Community organisations as detailed below.



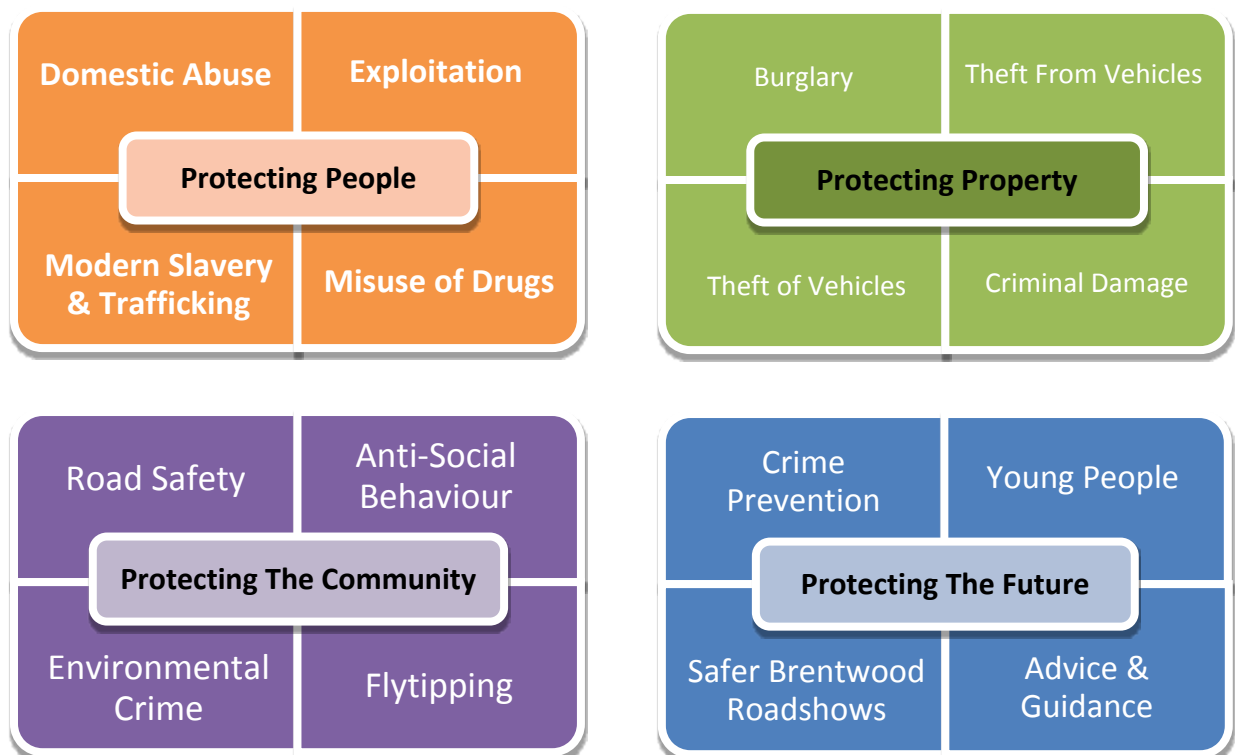
The CSP is currently chaired by Cllr Chris Hossack and Essex Police, Chief Inspector Lewis Basford is Vice Chair. Each year the CSP are required to prepare a Strategic Intelligence Assessment to review existing priorities and identify any new or emerging priorities that the partnership should focus on.

Following this analysis and identification of the strategic priorities a Partnership Plan is produced detailing the partnerships activities for the forthcoming year to address the issues raised in the Strategic Intelligence Assessment.

The Partnership Plan is a public facing document which details the priorities identified by residents and data from the Strategic Intelligence Assessment. The document includes detailed action plans for each priority area and sets out how the partnership will work together over the next twelve months to tackle crime and disorder and achieve its priorities.

This plan also has regard to the police and crime objectives set out in the Police, Fire and Crime Commissioners (PFCC) Police and Crime Plan.

The priorities identified from the 2018/2019 Strategic Assessment are:



Policing Structure and Resources

Brentwood Borough forms part of Essex Police West Local Policing Area (LPA), which also includes the districts of Epping Forest, Harlow and Thurrock. The Borough accounts for 22% of the area and 17% of the population of the LPA.

Since November 2017 Essex Police moved into the Town Hall to their new base. This has further improved communication and partnership work with the Council. The community safety team have access to the police station and have further developed their working relationships with local officers.

The **Community Policing Team (CPT)** delivers community policing within the borough and comprises of:

- **1** Inspector, covering Epping Forest and Brentwood
- **1** Sergeant covering Brentwood
- **5** Constables, covering Brentwood
- **3** Police Community Support Officers (PCSOs) for Brentwood.
- **1** Rural Community Officer who is shared with Epping Forest.
- **9** Special Constables at Brentwood with **5** of them allocated to the CPT. There have been a number of Brentwood specials that have gone on to join the regulars which has temporarily reduced our numbers.

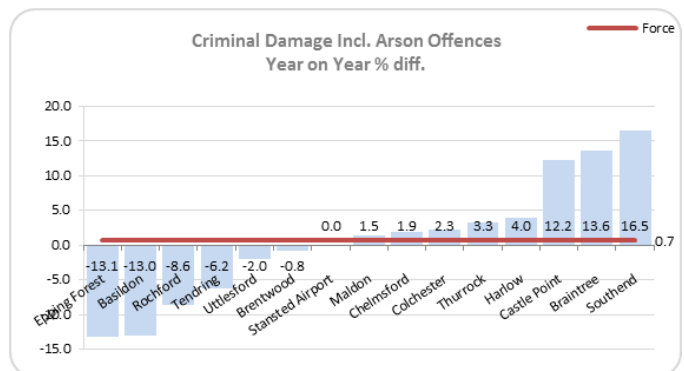
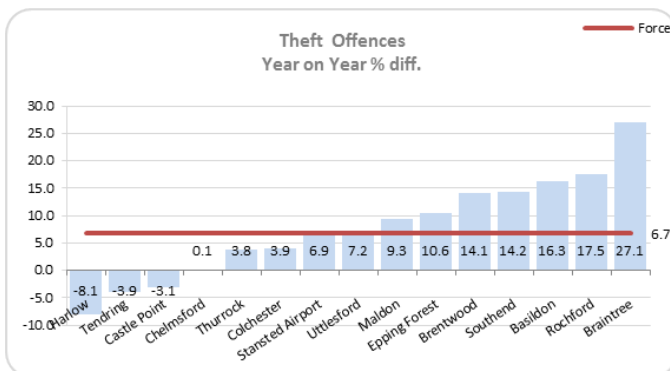
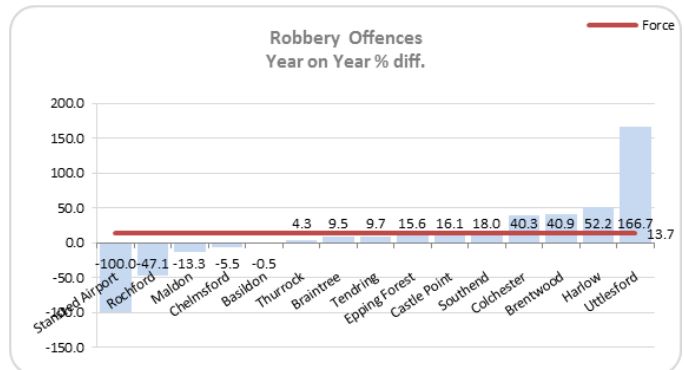
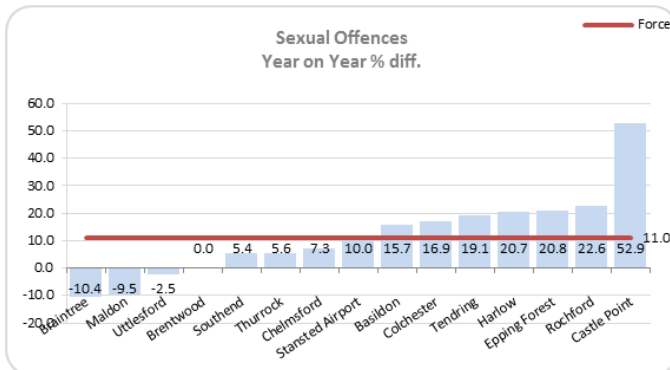
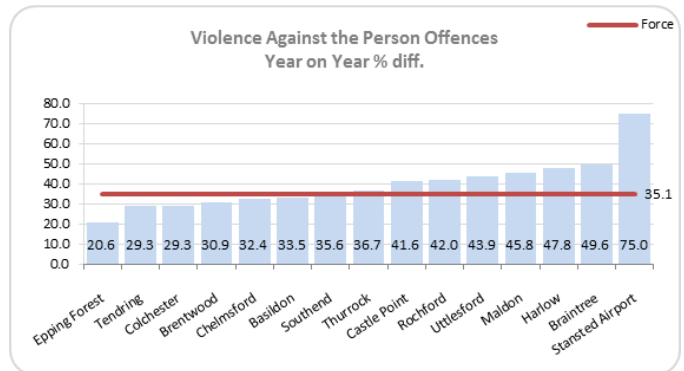
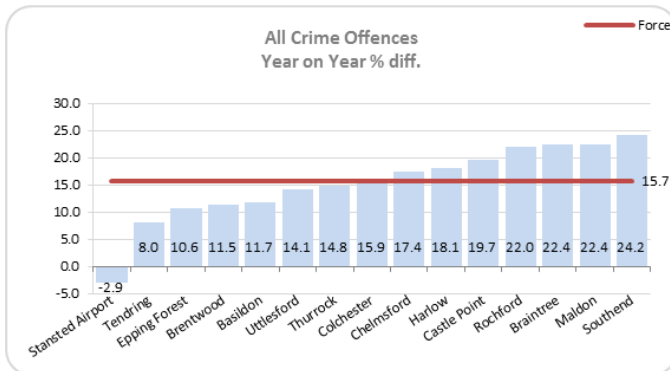
The Police Fire & Crime Commissioners budget was approved by the Police, Fire and Crime Panel in January. This means that Essex Police will receive an increase in funding by £23m.

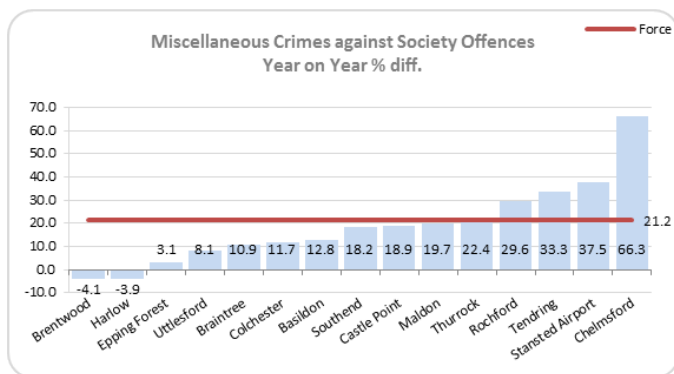
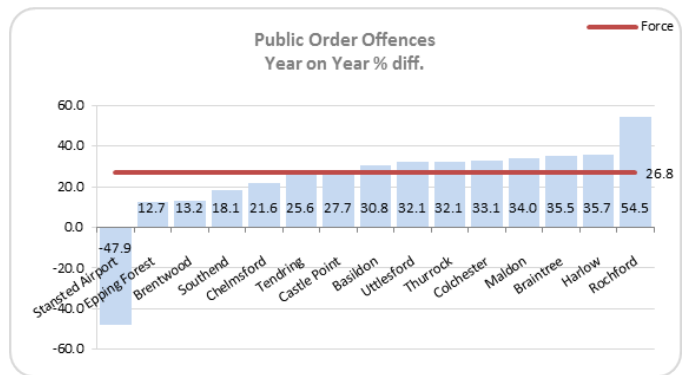
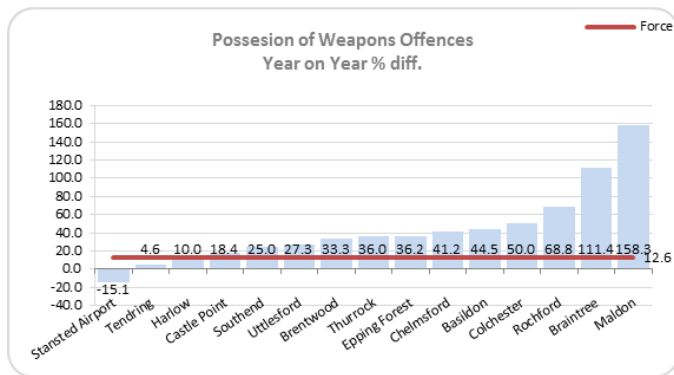
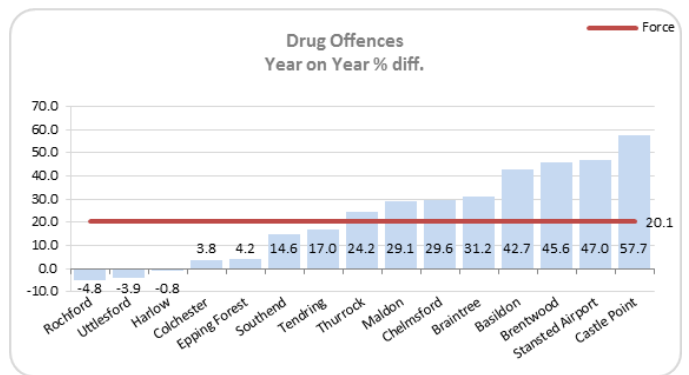
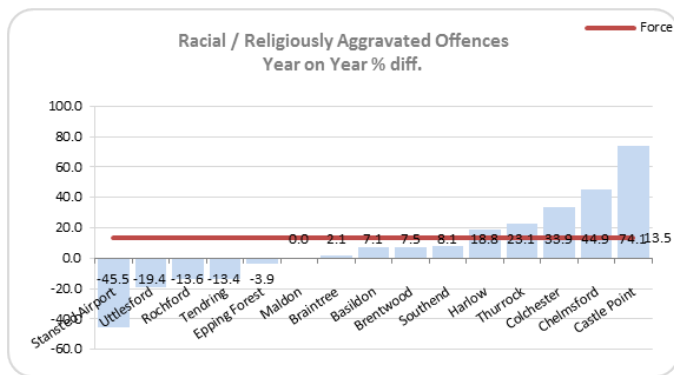
The money will be invested in 215 additional police officers on top of the 150 recruited this year as well as 32 operational police staff and 18 police support staff. They will be divided into a number of teams including:

- 68 officers dedicated to town centre policing
- 50 officers to local policing teams
- 21 roads policing officers
- 20 officers dedicated to working with children and young people
- 20 officers to boost the force's crime and public protection command

- 20 officers dedicated to dealing with gangs and violence and vulnerability
- Seven officers to join the Gypsy, Traveller and Rural Engagement Team
- Six for the Serious Crime Directorate
- Three for a new dedicated business crime team

Below are tables relating to crime statistics Force Wide across Essex. Overall Brentwood sits on the lower end of the crime statistics across Essex.





Brentwood

Rolling 12 Months to January

Top Level		Offences				Solved Outcomes				Solved Rates %		
Crime Type	% DA 2019	2018	2019	# diff.	% diff.	2018	2019	# diff.	% diff.	2018	2019	% pt. diff.
Anti-Social Behaviour (incidents)	-	1756	1550	-206	-11.7	-	-	-	-	-	-	-
All Crime (excl. Action (NFIB) Fraud)	15.0	4820	5373	553	11.5	559	516	-43	-7.7	11.6	9.6	-2.0
- State Based Crime	7.6	489	563	74	15.1	134	131	-3	-2.2	27.4	23.3	-4.1
- Victim Based Crime	15.8	4331	4810	479	11.1	425	385	-40	-9.4	9.8	8.0	-1.8
Victim Based Crime		Offences				Solved Outcomes				Solved Rates %		
Crime Type	% DA 2019	2018	2019	# diff.	% diff.	2018	2019	# diff.	% diff.	2018	2019	% pt. diff.
Violence Against the Person	39.9	1262	1652	390	30.9	181	158	-23	-12.7	14.3	9.6	-4.8
- Homicide	-	1	0	-1	-100.0	0	0	0	-	0.0	-	-
- Violence with Injury	35.6	416	444	28	6.7	73	71	-2	-2.7	17.5	16.0	-1.6
- Death or Serious Injury caused by unlawful driving	0.0	5	2	-3	-60.0	4	2	-2	-50.0	80.0	100.0	20.0
- Violence without Injury	45.9	542	619	77	14.2	63	46	-17	-27.0	11.6	7.4	-4.2
- Stalking and Harassment	37.0	298	587	289	97.0	41	39	-2	-4.9	13.8	6.6	-7.1
- Violence with Injury (pre-Nov 17 definition)	35.4	421	446	25	5.9	77	73	-4	-5.2	18.3	16.4	-1.9
- Violence without Injury (pre-Nov 17 definition)	41.5	840	1206	366	43.6	104	85	-19	-18.3	12.4	7.0	-5.3
Sexual Offences	16.0	106	106	0	0.0	11	5	-6	-54.5	10.4	4.7	-5.7
- Rape	28.8	31	52	21	67.7	2	2	0	0.0	6.5	3.8	-2.6
- Rape - Under 16 yrs	0.0	11	14	3	27.3	0	2	2	-	0.0	14.3	14.3
- Rape - Over 16 yrs	39.5	20	38	18	90.0	2	0	-2	-100.0	10.0	0.0	-10.0
- Other Sexual Offences	3.7	75	54	-21	-28.0	9	3	-6	-66.7	12.0	5.6	-6.4
Robbery	3.2	44	62	18	40.9	6	16	10	166.7	13.6	25.8	12.2
- Robbery of business property	0.0	6	8	2	33.3	1	5	4	400.0	16.7	62.5	45.8
- Robbery of Personal Property	3.7	38	54	16	42.1	5	11	6	120.0	13.2	20.4	7.2
Theft Offences	0.9	2390	2465	75	3.1	185	165	-20	-10.8	7.7	6.7	-1.0
- Burglary	0.4	720	566	-154	-21.4	88	34	-54	-61.4	12.2	6.0	-6.2
- Burglary Residential	0.5	-	417	-	-	-	25	-	-	-	6.0	-
- Burglary Business & Community	0.0	-	149	-	-	-	9	-	-	-	6.0	-
- Burglary Dwelling (pre-Apr 17 definition)	0.3	366	299	-67	-18.3	59	24	-35	-59.3	16.1	8.0	-8.1
- Burglary Other (pre-Apr 17 definition)	0.4	354	267	-87	-24.6	29	10	-19	-65.5	8.2	3.7	-4.4
- Vehicle Offences (incl. Interference)	0.1	770	872	102	13.2	9	14	5	55.6	1.2	1.6	0.4
- Theft from a Vehicle	0.0	383	401	18	4.7	4	2	-2	-50.0	1.0	0.5	-0.5
- Theft of a Vehicle	0.3	287	394	107	37.3	4	12	8	200.0	1.4	3.0	1.7
- Vehicle Interference	0.0	100	77	-23	-23.0	1	0	-1	-100.0	1.0	0.0	-1.0
- Theft	1.9	900	1027	127	14.1	88	117	29	33.0	9.8	11.4	1.6
- Theft from the Person	1.4	80	69	-11	-13.8	1	0	-1	-100.0	1.3	0.0	-1.3
- Theft of Pedal Cycle	0.0	101	84	-17	-16.8	1	2	1	100.0	1.0	2.4	1.4
- Shoplifting	0.0	204	314	110	53.9	53	63	10	18.9	26.0	20.1	-5.9
- Other Theft	3.2	515	560	45	8.7	33	52	19	57.6	6.4	9.3	2.9
Criminal Damage inc. Arson	11.8	529	525	-4	-0.8	42	41	-1	-2.4	7.9	7.8	-0.1
- Criminal Damage	12.3	510	505	-5	-1.0	41	39	-2	-4.9	8.0	7.7	-0.3
- Arson	0.0	19	20	1	5.3	1	2	1	100.0	5.3	10.0	4.7
Racial/Religiously Aggravated Offences	2.3	40	43	3	7.5	4	9	5	125.0	10.0	20.9	10.9
Hate Crime HO Definition	6.3	60	79	19	31.7	6	12	6	100.0	10.0	15.2	5.2
State Based Crime		Offences				Solved Outcomes				Solved Rates %		
Crime Type	% DA 2019	2018	2019	# diff.	% diff.	2018	2019	# diff.	% diff.	2018	2019	% pt. diff.
Drug Offences	0.0	68	99	31	45.6	60	75	15	25.0	88.2	75.8	-12.5
- Trafficking of Drugs	0.0	12	14	2	16.7	5	5	0	0.0	41.7	35.7	-6.0
- Possession of Drugs	0.0	56	85	29	51.8	55	70	15	27.3	98.2	82.4	-15.9
Possession of Weapons	3.6	21	28	7	33.3	7	7	0	0.0	33.3	25.0	-8.3
Public Order	7.6	302	342	40	13.2	51	35	-16	-31.4	16.9	10.2	-6.7
Miscellaneous Crimes against Society	17.0	98	94	-4	-4.1	16	14	-2	-12.5	16.3	14.9	-1.4

- *All Crime has increased by 11.5% (553 more offences). This is in line with national increases and changes to crime recording.*
- *Anti-Social Behaviour is down 11.7% (206 less offences). This is hugely down to the joint work of the Community Safety Team, Enforcement Team and Essex Police patrolling hotspot areas and having more of a visible presence.*
- *Theft of Pedal Cycles has decreased by 16.8% (17 less offences). A decrease in offences compared with last years spike in thefts dealt with jointly by the Community Safety Team, Essex Police and CCTV.*
- *Burglary has decreased by 21.4% (154 less offences). This is down to the joint work of the Community Safety Team, Essex Police and Neighbourhood Watch engaging with the public and promoting home safety.*
- *Hate Crime offences have increased by 31.7% (19 more offences).*
- *Drugs Offences, Possession of Weapons, Shoplifting and Vehicle Theft have all increased.*

Partnership Activity and Achievements

Council CCTV Control have become a key member of the Community Safety Partnership and have worked extremely hard to support activity undertaken by the Council and Essex Police. A Police Airwave Radio is permanently located in the CCTV control room so that operators have direct access to Essex Police. CCTV have seen the replacement and upgrading of five HD cameras in Shenfield and 5 HD cameras in Brentwood, with a further ten being upgraded to full HD this year. Alongside the installation of the new HD cameras a new wireless network has been put in place, this has reduced the running costs of transmission to zero. The Coptfold Road Multi-Story Car Park has been fully refitted with 30 HD cameras. Data is also shared with partners in relation to the use of CCTV in the interest of Community Safety.

During the last year the Council's partnership with Thurrock Council has resulted in the deployment of four mobile cameras to hotspot areas, with the capability of deploying a further six. The Community Safety Manager has worked closely with CCTV and Thurrock Council to identify all public areas under Council control with high or increased instances of ASB, and where possible arranged to have columns in these areas prepared and made ready for rapid deployment of additional CCTV cameras.

Community Engagement - The partnership has continued to deliver a vast number of community engagement events across the borough and wider Essex covering many topics as detailed below:

1. Baytree Centre – Road Safety **x2**
2. Town Hall Speedwatch Training
3. Baytree Centre – Rogue Traders **x3**
4. Baytree Centre – CSP/NHW
5. High Street – Community Day
6. CVS Breakfast Event **x2**
7. High Street – Diabetes Day
8. Bay Tree – EDWARD (European Day Without A Death)
9. High Street – Bicycle Safety & Protection

- 10. Bay Tree – Hate Crime x2
- 11. Bay Tree – Op Mercury/Burglary
- 12. Brentwood Showcase
- 13. Bay Tree – Road Safety (BRAKE) x2
- 14. Police Fire & Crime Commissioners Public Meeting
- 15. Council events such as Strawberry Fair, Family Fun Days, and recycling roadshows x6
- 16. Baytree Centre – CPR/Defib Demo

The above engagement events were in addition to the regular sessions in the local libraries, community hospital, and community halls which total 44 in number. Therefore, bringing the total number of engagement days up to approximately 70. The sessions are delivered by the Neighbourhood Watch (NHW) Co-ordinator, Peter Salmon. The aim is to provide crime prevention advice and give residents the opportunity to give their views on community safety issues.

Community Safety Roadshow is a real partnership effort with representatives from the Council's community safety team, Essex Police, Essex County Fire & Rescue, Crimestoppers and NHW. The team visit groups, schools, clubs, sheltered schemes to provide information and advice on a range of safety issues including crime and safety awareness, fraud, fire safety and burglary.

Neighbourhood Watch (NHW) - Brentwood is extremely privileged to have such a dedicated volunteer, Peter Salmon who co-ordinates NHW across the Borough. He is extremely proactive driving the scheme across Brentwood and further afield.

The NHW co-ordinator attends the CSP Strategy Panel meetings and represents Brentwood at County-wide meetings. It is recognised by the partnership that without the support of our local co-ordinator we would not be able to deliver such a comprehensive engagement programme.

As well as promoting NHW across the borough he has also distributed information leaflets/booklet and crime prevention items such as:

- Window Alarms
- ID Magnifier
- Personal Alarms
- Purse Bells
- Purse Cables
- Property Marker Pens
- Timer Switches
- Sat Nav Cloths
- Key Ring Torches
- Door Chains
- Leaflets including: Lock Em Out, scam booklet, community safety booklet, junior highway code booklet, and much more

The NHW volunteer co-ordinator also produces a monthly ‘be wary’ information leaflet with key current community safety topics that is displayed in many key locations across the borough and is also shared with Parish Councils and wider partners.

Crimestoppers are an independent charity with a **30**-year history of providing anonymity for anyone wishing to report crime without having to go to the authorities. They are an integral member of the partnership, and have supported our work including (up to Feb 19):

- *Ongoing expansion of the Essex Ambassador partner programme (presently have around 75 participating organisations in Essex)*
- *Supported various engagement events across the borough*
- *Campaign targeting Drugs and Human smuggling activities around Airfields and Marinas during the summer (targeted coastal and airfields only)*
- Expansion of the ‘Cuckooing’ campaign across Essex to highlight the problem of gangs taking over the homes of vulnerable people to deal drugs and commit other crimes
- New County Lines campaign launched late summer

- Phase two of the Rural crime campaign launching in December (new images and social media) to encourage people to speak up against crime in countryside
- Theft of Asian Gold campaign launched in December for the festival season
- Crimestoppers and Neighbourhood Watch partnering in a number of joint campaign communication actions across Essex including presentations to NHW member groups
- *Now participating in Brentwood/Ongar IAG meetings*
- Ongoing media activity through Radio/TV engagements (BBC Essex, Phoenix Radio, BBC Look East TV) and print media

Statistics

With a record 450,000 people nationally contacting us, Crimestoppers is clearly reaching out in an effective and meaningful way to a diverse population. Almost half of those who use our charity's service are aged under-35 and one in five is from a black or minority ethnic group.

In the first 9 months of 2018, our total crime reports for Essex were 4,800, an 11% increase over the same period last year

Notable crime report increases included:

- Drink Driving
- Drugs Trafficking and Supply
- Immigration offences
- Possession of Weapons

Total crime reports for the full year (18/19) are forecast to reach around 6,500, a 12% increase over the prior year and another new record in Essex. Over the last three years (since 2015/16), the number of crime reports we have received has doubled (from 268 per month to 532).



As a result of nearly 6,000 reports given to Crimestoppers, more than 500 people have been arrested and charged during 2017/18.



Speak up and stop crime in the Essex countryside.

Whatever your crime concerns tell us what you know.
100% anonymous. Always.

Crimestoppers.
crimestoppers-uk.org
0800 555 111
100% anonymous. Always.



Cut the chance of being hurt by knife crime.

Do you know someone regularly carrying a knife?
Speak up. Stay safe.
100% anonymous. Always.

We won't ask your name.
Won't judge.
Just listen to what you know.
And pass it on for you.

Crimestoppers.
crimestoppers-uk.org
0800 555 111
100% anonymous. Always.

Crimestoppers. MarineAlert

Drugs and human trafficking are BIG business in Essex

Drugs and human trafficking are serious high-volume crimes leading to violence, child exploitation and abuse.

Boats and yachts are used by gangs to carry out illegal imports at ports and marinas especially those with limited or no checks.

Suspicious activities

- Attempts to test or research security -
- Late night or early morning activity -
- Suspicious deliveries -
- People in the wrong place or behaving unusually -
- Unusual presence of boats or yachts -
- A vessel that has been unusually modified -
- A boat or yacht owner being evasive about passengers or routes -
- Boat or yacht owner ignoring marine regulations or filing misleading or false reports -
- Concealed cargo -
- Packages or passengers being transferred to dinghies, other boats or waiting cars -
- Items being handled suspiciously.



Speak up. Stop crime. Stay safe. 100% anonymous. Always

Please be vigilant at all times around these locations.

If you see a crime in progress, then you should report it to the police immediately using the 999 number. Do not try to get involved.

Alternatively, you can safely contact the charity Crimestoppers.

We give people the power to speak up to stop crime. By phone and online, 24/7, 365 days a year. You'll remain

100% anonymous.

We've been around since 1968. We're independent. We won't ask your name. Won't judge. Just listen to what you know. When you hang up the phone (0800 555 111) or click 'send' (crimestoppers-uk.org) you're done.

No police contact. No witness statements. No courts. We will pass on any information to the police. Our service is designed to pro-

tect your identity, whether you call us or submit information online.

Crimestoppers.
0800 555 111
100% anonymous. Always.



Drug gangs are exploiting vulnerable people in your area

Using violence and abuse, criminals are getting others to act as couriers for drugs and cash. Sometimes taking over the homes of the victims.

Speak out. Tell us what you know.

Crimestoppers.
crimestoppers-uk.org
0800 555 111
100% anonymous. Always.

Local Independent Advisory Group - The partnership has continued to support the joint LIAG with Essex Police and Epping Forest District Council. The aim of the group is to review police working practices, to assist Essex Police better understand how its processes and policies can affect our local communities and to give communities a voice on key issues. The group meet quarterly.

Public Meetings - Essex Police are continuing to engage with the community at various events and public meetings. Some of these are with the support of NHW and the CSP. Essex Police launched coffee with cops in the Borough which has proved very successful as well as the long-standing Local Community Meetings.

Below are a list of meetings and engagement events Brentwood CPT have been a part of

Coffee with Cops – 25

Local Community Meetings – 32

Partnership events – 27

Street events – 4

Other events – 18

Total 106 events

The CSP believe strongly that communication with communities is key. There is a very active social media programme including the use of Twitter with over 550 followers, a dedicated website and quarterly CSP Newsletter which is posted on our website and is also distributed to Members, Parish Councils, local businesses through the Federation of Small Business (FSB), local community groups, schools who then forward the newsletter on to parents, and more. It is estimated that the newsletter reaches over 3000 readers.

CSP Website: www.saferbrentwood.com

Twitter: @saferbrentwood

Just a few examples of our good work



Anti-Social Behaviour - Since January 2018 the following has been achieved:

- 125 cases reported and have closed 98 cases with 25 still open under investigation.
- 11 Notices of Seeking Possession have been served for a variety of different reasons
- A demotion of tenancy is being sought for a long standing ASB issue in one of the sheltered schemes
- 6 Acceptable Behaviour Contracts have been signed by tenants regarding their behaviour. One of the ABCs was for a tenant's child who was causing ASB and was mentored by the ASB Officer.
- Two injunctions have been sought and granted for threatening behaviour against residents.
- Two Community Protection Warnings and one Community Protection Notice has been served in Brentwood High Street.

The officer also attends monthly Community Safety Tasking and is working on ensuring all cases are recorded on the Council's case management system.

Nuisance Vehicles have continued to be an issue for the partnership. Overall there has been a decrease in the number of ASB reports and the partnership have worked hard to eradicate the hotspots from last year. However, reports of anti-social behaviour involving cars at William Hunter Way has started to increase once more. As a result, various activities were undertaken by the partnership which included:

- CCTV Cameras targeting specific areas in the car park
- Regular and out of hour patrols by the Corporate Enforcement Team with support from Essex Police
- Warning letters and Section 59 Notices continue to be issued at William Hunter Way
- Introduction of the PSPO to help tackle ASB

The CSP has remained committed to tackling such a key issue for local communities. This year has been an extremely busy one for the partnership with various projects aimed at a vast cross section from nursery age, young people to the vulnerable and elderly.

Listed below are some of those projects:

Firebreak The partnership continues to support the project aimed at young people which is delivered by Essex County Fire & Rescue Services. Along with the Council the partnership has assisted in securing one course this year which has been run from Ingatestone Fire Station.



County Lines –

Two Johns is an online safety workshop aimed at educating young people how to keep themselves safe whilst online. The project has been commissioned for four local schools to over 2000 young people.

Power of Love is a hard-hitting theatre performance which will be delivered to students in years 9 & 10 and explores key areas such as Bullying, exploitation, domestic violence, intimidation, respect & trust.

Home Security Visits has been developed from the Door Chain Project which was who receive introductory training by Essex Police and Essex County Fire & Rescue Service. They will then visit the homes of vulnerable or elderly residents who may require additional security measures which now includes carbon monoxide detectors.

Speedwatch has continued to grow and even more members of the public are trained. A dedicated Speedwatch email is in place for Speedwatch groups to utilise and a speed gun is available for groups to use which is located at the Town Hall and co-ordinated by the Community Safety team. Whilst this scheme is primarily to target speeding drivers it is also a very visible presence in a locality which can only help to assist with discouraging burglars.

The Essex Restorative and Mediation Service holds offenders to account and helps them take responsibility for the harm they have caused. Both parties discuss next steps and the perpetrators can then make amends.

Victims are given the chance to explain the impact the crime or conflict has had on them, ask questions of the perpetrator and seek an apology. It enables offenders to be held to account for what they have done but also take responsibility for the harm they have caused. If a face to face meeting is not appropriate, they can do so indirectly via letters or messages.

Representatives from the Restorative Justice (RJ) Hub attend local monthly meetings to discuss cases and consider whether an RJ referral would be appropriate.

Since January 2016 a total of 1170 referrals have been made to the RJ Hub in Essex 881 coming from Essex Police.

Seasonal Burglary Operation The partnership has been involved in targeting and preventing the seasonal increase in burglaries that occurs across the whole county over the Winter months. The force wide operation was Operation Mercury and highlighted the clocks going back and darker nights.

Essex Police have performed extra patrols (both visible and uniform) between November and February. They have deployed Automatic number plate readers (ANPR) resulting in number of arrests linked to burglary and other offences.

The Casualty reduction bureau has also assisted by deploying road safety checks/speed checks in areas of high burglaries so as well as road safety they are also using their technology to look for Burglars and travelling criminals using ANPR.

A number of other units within Essex police also provided assistance:

- Serious Crime Directorate was sought for advice.
- The Operational Support Group assisted in arresting suspects.
- The Special constabulary assisted in all aspects and particularly in preventative patrols.
- Active Citizens were also used to distribute crime prevention leaflets and advice
- The dog section attended and exercised their dogs in burglary hot spot areas.
- Cross border work with British Transport Police (BTP) and the Metropolitan Police Service (MPS) have carried out which resulted in the identification of a suspect who was subsequently arrested.

Operation Insight consists of a system of analysis and the deployment of resources into 'hot spots' likely to suffer burglaries, reducing the chance of them occurring. This policing operation enables the police to use resources more efficiently and maximises the opportunity to prevent crime. Intelligence is produced weekly to highlight areas for more intensive patrolling based on their vulnerability to offences.

This is shared with partners and the Council's Community Safety team then disseminate to other departments within the Council to make sure staff are aware and can factor this information into their regular patrols, visits and work schedule etc.

Operation Insight also includes 'Cocooning' which involves crime prevention work carried out by the community policing team specifically targeting premises in the immediate vicinity of a burglary. Residents are visited and given crime prevention advice to ensure security measures are in place to reduce the risk of them becoming victims.

Local police officers are supported by County resources and have performed intelligence-led police work and high-volume deployments which have resulted in some key arrests, crime prevention and intelligence gathering. This activity maintains pressure on known offenders and aims to reduce crime.

As the report shows 2018/19 has been a very busy year for the partnership with a large number of initiatives and projects being commissioned and delivered in order to deliver against our priorities and joint objectives.

Relationships have been developed and strengthened and the partnership is striving to deliver our partnership promise.

The Partnership Promise

We are committed to delivering local solutions to local problems that have been identified by local people.

In addition, the Partnership's work will provide the opportunity to work together with our partners such as Essex Police, Essex Fire & Rescue Service, Neighbourhood Watch and many others to achieve our corporate objectives.